

Health and Wellbeing Board

Thursday 16 March 2023

10.00 am

Ground floor meeting rooms, 160 Tooley Street, London SE1 2QH

Membership

Councillor Kieron Williams (Chair)	Leader of the Council
Dr Nancy Kuchemann (Vice-Chair)	Co-Chair Partnership Southwark and Joint Chair of the Clinical and Care Professional Leadership Group
Councillor Evelyn Akoto	Cabinet Member for Health and Wellbeing
Councillor Jasmine Ali	Deputy Leader and Cabinet Member for Children, Young People and Education
Councillor Dora Dixon-Fyle MBE	Cabinet Member for Community Safety
Councillor Maria Linforth-Hall	Opposition Spokesperson for Health
Anood Al-Samerai	Chair, Community Southwark
Sarah Austin	Chief Executive Integrated and Specialist Medicine for Guy's and St Thomas' NHS Foundation Trust
David Bradley	Chief Executive of South London and Maudsley NHS Foundation Trust
Cassie Buchanan	Southwark Headteachers Representative
Sheona St Hilaire	Chair, Healthwatch Southwark
Clive Kay	Chief Executive, King's College Hospital NHS Foundation Trust
Sangeeta Leahy	Director of Public Health , Southwark Council
Althea Loderick	Chief Executive, Southwark Council
James Lowell	Place Executive Lead
David Quirke-Thornton	Strategic Director of Children's and Adults' Services
Andrew Ratcliffe	Guy's and St. Thomas' Foundation
Alasdair Smith	Director of Children and Families
Martin Wilkinson	Chief Operating Officer, Southwark, NHS SEL Integrated Care Board

INFORMATION FOR MEMBERS OF THE PUBLIC

Access to information

You have the right to request to inspect copies of minutes and reports on this agenda as well as the background documents used in the preparation of these reports.

Babysitting/Carers allowances

If you are a resident of the borough and have paid someone to look after your children, an elderly dependant or a dependant with disabilities so that you could attend this meeting, you may claim an allowance from the council. Please collect a claim form at the meeting.

Access

The council is committed to making its meetings accessible. Further details on building access, translation, provision of signers etc for this meeting are on the council's web site: www.southwark.gov.uk or please contact the person below.

Contact

Maria Lugangira 020 7525 7228 or email: maria.lugangira@southwark.gov.uk
Webpage: [Health and Wellbeing Board - Southwark Council](#)

Members of the committee are summoned to attend this meeting

Althea Loderick

Chief Executive

Date: 8 March 2023



Health and Wellbeing Board

Thursday 16 March 2023

10.00 am

Ground floor meeting rooms, 160 Tooley Street, London SE1 2QH

Order of Business

Item No.	Title	Page No.
1.	WELCOME AND INTRODUCTIONS	
2.	APOLOGIES	
	To receive any apologies for absence.	
3.	CONFIRMATION OF VOTING MEMBERS	
	Voting members of the committee to be confirmed at this point in the meeting.	
4.	NOTIFICATION OF ANY ITEMS OF BUSINESS WHICH THE CHAIR DEEMS URGENT	
	In special circumstances, an item of business may be added to an agenda within five clear days of the meeting.	
5.	DISCLOSURE OF INTERESTS AND DISPENSATIONS	
	Members of the committee to declare any interests and dispensation in respect of any item of business to be considered at this meeting.	
6.	MINUTES	1 - 3
	To agree as a correct record the open minutes of the meeting held on 17 November 2022.	
7.	PUBLIC QUESTION TIME (15 MINUTES)	
	To receive any question from members of the public which have been submitted in advance of the meeting in accordance with the procedure rules. The deadline for receipt of public questions is midnight Friday, 10 March 2023.	

Item No.	Title	Page No.
8.	COMMUNITY UPDATE: THE NEST	Verbal Report
	To receive verbal update and presentation from the Nest.	
9.	CHILDREN AND YOUNG PEOPLE'S MENTAL HEALTH SUPPORT IN SCHOOLS	4 - 13
	To note the progress being made to support children and young people's mental health in schools.	
10.	MENTAL HEALTH AND WELLBEING OF ADULTS	To Follow
	To note the progress being made to support adults and with the Wellbeing Hub.	
11.	AIR QUALITY ACTION PLAN 2023 - 2027, AIR QUALITY MANAGEMENT AREA EXTENSION, AND AIR QUALITY JOINT STRATEGIC NEEDS ASSESSMENT	14 - 19
	To note the new Air Quality Action Plan 2023 – 2027 and recently updated Air Quality Joint Strategic Needs Assessment (JSNA).	
12.	COVID-19 MONITORING REPORT	20 - 29
	To note the contents the update on COVID-19 Monitoring	
13.	ANY OTHER BUSINESS	

Date: 8 March 2023



HEALTH AND WELLBEING BOARD

MINUTES of the Health and Wellbeing Board held on Monday 30 January 2023 at 1.00 pm at VIRTUAL

PRESENT: Councillor Kieron Williams (Chair)
Councillor Jasmine Ali
Councillor Dora Dixon-Fyle MBE
Councillor Maria Linforth-Hall
Sarah Austin
Dr Sumeeta Dhir (substituting for Dr Nancy Kutchman)
Sheona St Hilaire
Sangeeta Leahy
Althea Loderick
James Lowell
David Quirke-Thornton
Martin Wilkinson

OFFICER SUPPORT: Chris Williamson – Head of Health and Wellbeing
Maria Lugangira – Principal Constitutional Officer

1. WELCOME AND INTRODUCTIONS

The Chair welcomed everyone to the meeting.

2. APOLOGIES

Apologies for absence were received from

- Councillor Evelyn Akoto
- Dr Nancy Kutchman
- David Bradley
- Anood Al-Samerai
- Cassie Buchanan

3. CONFIRMATION OF VOTING MEMBERS

Those listed as present were confirmed as the voting members.

4. NOTIFICATION OF ANY ITEMS OF BUSINESS WHICH THE CHAIR DEEMS URGENT

There were none.

5. DISCLOSURE OF INTERESTS AND DISPENSATIONS

There were none.

6. MINUTES

RESOLVED – That the minutes of the meeting held on 17 November 2022 be approved as a correct record of the meeting

7. PUBLIC QUESTION TIME (15 MINUTES)

There were none.

8. BETTER CARE FUND AND ADULT SOCIAL CARE DISCHARGE FUND

Martin Wilkinson, Chief Operating Officer, Southwark, NHS SEL Integrated Care Board introduced the report and provided the Board with an update on the outcome following the plan's submission to NHS England for assurance.

RESOLVED -

That the Health and Wellbeing Board:

1. noted the approval letter for the 2022/23 Better Care Fund (BCF) plan submitted in September (appendix 1 of the report).
2. noted the new national Adult Social Care Discharge Fund for 2022/23 that has been incorporated into the BCF (paragraph 6) and endorses the Southwark plan submitted for use of this funding (appendix 2 of the report).
3. noted the additional NHS funding for hospital discharge announced on 13th January to be managed alongside the BCF (paragraph 7 of the report).
4. noted that the national 2023/24 BCF policy framework and planning guidance have not yet been published.

5. noted the current plan is for no further voluntary expansion of the BCF above minimum required levels (paragraph 12 of the report).
6. commented on the intention to focus on developing collaborative approaches for services for people with SMI (Severe Mental Illness) and adolescent mental health (14 to 25 years) outside the BCF mechanism (paragraph 12 of the report) .

9. ANY OTHER BUSINESS

There was none.

Meeting ended at 1.18 pm

CHAIR:

DATED:

Item No.	Classification: Open	Date: 16 March 2023	Meeting Name: Health and Wellbeing Board
Report title:		Children and Young People’s Mental Health Support in Schools	
Ward(s) or groups affected:		All	
From:		Director of Commissioning, Children and Adult Services	

RECOMMENDATION(S)

1. That the Health and Wellbeing Board note the progress being made to support children and young people’s mental health in schools.

BACKGROUND INFORMATION

2. Southwark Council and its partners are committed to improving outcomes for children and young people through the support offered across services for children and young people’s mental health and emotional wellbeing services.
3. Partnership Southwark is known to serve children and young people at an elevated risk of mental health issues. Southwark young people are at a high risk than the national rate of being first time entrants to the Youth Justice system, of homelessness and of attendance at Accident and Emergency.
4. The Local Transformation Plan is used to develop the ambitions to improve children and young people’s mental health services locally and across the South East London Integrated Care System, it is also a national requirement. The development of the latest version of the Local Transformation Plan is a part of the high level objective of the Partnership to ensure system leadership arrangements are clear and transparent locally, the plan will run for the next two years from 2023- 2025.
5. Wider work on children and young people’s mental health provision sets out clear expectations with regards to the work with schools to improve children and young people’s mental health. This builds on work already underway and seeks to expand this further across the range of programmes in place. The support across the range of services is aimed at mild to moderate emotional wellbeing and mental health needs and programme leads work closely with the leads in clinical services to refer to support for more acute needs.

KEY ISSUES FOR CONSIDERATION

6. There are four main programmes of support in schools:
 1. Improving Mental Health and Resilience in Schools (IMHARS)
 2. Youth New Deal
 3. Kooth
 4. Mental Health Support Team (MHST)

Improving Mental Health and Resilience in Schools (IMHARS)

7. The IMHARS programme has been in place for a number of years and supports a whole school approach to mental health and wellbeing with the aim of providing easily accessible and flexible resources that enable schools and colleges to reflect on their current provision for mental health and wellbeing through the lens of resilience.
8. The programme is evidence based and research informed. It has been developed in collaboration with teachers and practitioners, local partners and experts including the Family Early Help Team, Educational Psychology Team, Southwark CAMHS and The Nest community mental health resource.
9. 90 schools have signed up to the programme and 95 across the borough have accessed Mental Health First Aid Training for more than 300 Mental Health First Aiders.
10. The priorities for the programme are:
 - Tackling and preventing inequalities and promoting inclusion, diversion and equalities
 - Sharing practice
 - Innovation (e.g. QA process, new projects, learning and programmes)
 - Enhanced accreditation
 - Enhanced PE and sport offer for schools
 - Bespoke training and CPD
 - Dept. for Education link programme to develop integrated working and access to support
11. The programme is overseen by the multi-agency IMHARS Board and there is also representation on the Southwark Children and Young Peoples Mental Health Steering Group and Emotional Wellbeing and Mental Health Working Group.

Youth New Deal

12. The Youth New Deal Programme is operated through the Nest as a part of Groundwork London, supporting children and young people with mental health difficulties and spotting the early signs. Latest performance data shows that of 316 students that completed feedback, 85% were positive

regarding the awareness raising and there was a 95% positive response regarding the topics covered. The majority of students supported were year 12 students but students in younger age groups were also supported.

13. Support is offered through school assemblies, targeted groups, staff training and universal workshops in primary and secondary schools covering differing subjects such as:
 - Combatting stress
 - Mental health and stigma
 - Wellbeing
 - Mental health 101
 - Mental health and social media
 - Dealing with change
 - Panic attacks
14. This work is ongoing and reports into the Mental Health Steering Group and Emotional Wellbeing and Mental Health Working Group.

Kooth

15. Kooth is an online mental wellbeing community, it offers anonymous advice with access to articles, discussion boards and a crisis service. The service is available 24/7 and sign up sessions including live tours of the website have been offered to promote take up.
16. The latest monthly data for Southwark shows 198 logins and 64 new registrations. The top three sources of signposting are schools, GPs and colleges. As Kooth operates 24/7 it provides support when other services are closed. The main access to support in the latest reporting period was out of hours (65%) evidencing that there is a need for this.
17. The top age groups accessing the site are as follows: 16 year olds (18.2%), 17 year olds (10.2%) and 13 year olds (12.5%).

Mental Health Support Teams in Schools

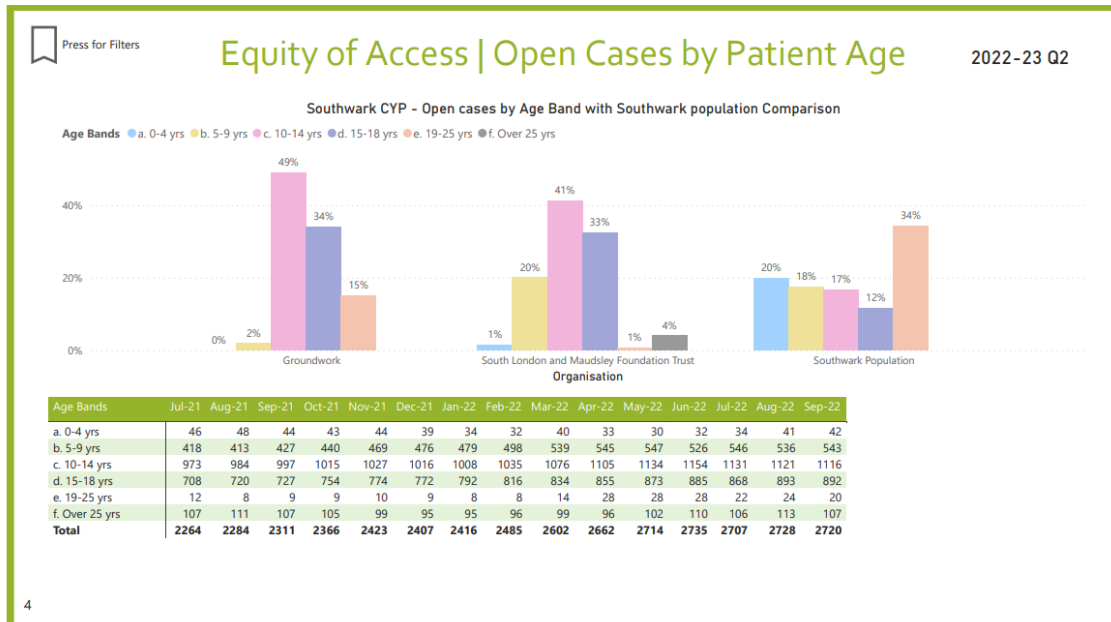
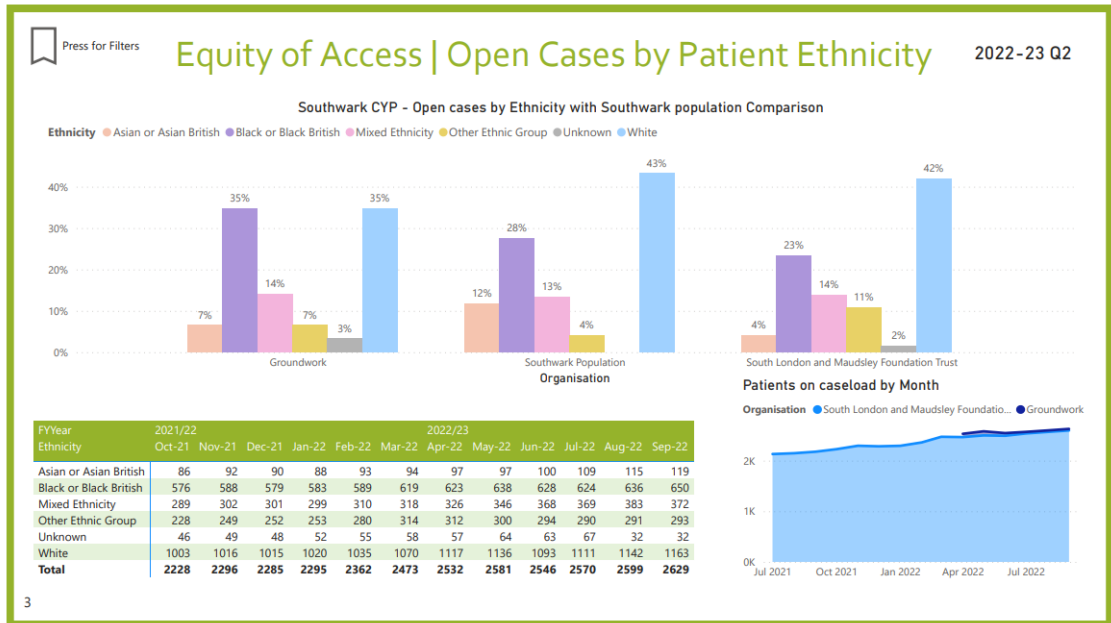
18. Southwark currently have one Mental Health Support Team that supports 12 schools, this commenced in January 2022. A second programme is due to commence in April 2023.
19. Schools are selected with a focus on inclusion and accessibility and work has commenced on collecting data on the demographics of those accessing the programme. The programme offers a mix of :
 - 1:1 work
 - Group work
 - Parent group work
 - Workshops
 - Staff training

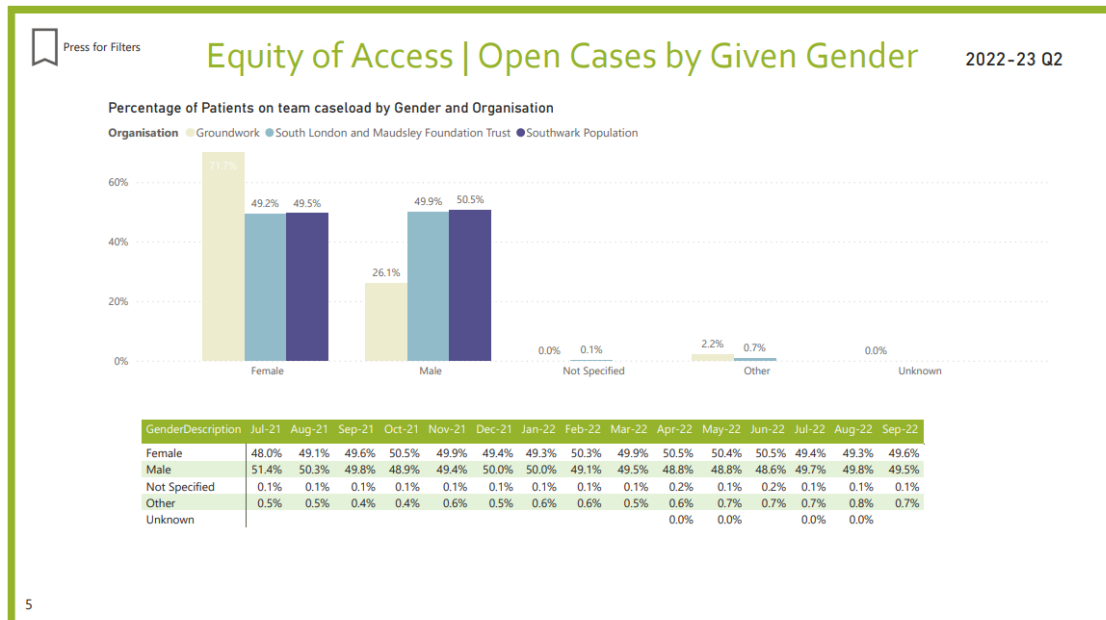
20. 1:1 work is based on principles of low intensity CBT aiming to provide practical evidence based strategies to address the presenting problem. For secondary aged pupils, sessions are focused on adolescent anxiety and adolescent low mood with 6-8 weekly sessions provided.
21. At primary age, parent led child anxiety with 6 weekly sessions including 2 phone 'check-ins' area offered as well as this, sessions on child challenging behavior are offered through 8 weekly sessions.
22. In the Autumn term 2022, 69 referrals for 1:1 support were received with 62 being accepted. Those that were rejected included no parental consent, already accessing support or above the threshold for support. Close working with other services ensures that cases are referred on if needed. The main reason for referral was a follow on from a group session followed by low mood and secondary anxiety.
23. Group work for primary aged children supported emotional regulation through a programme developed by the Anna Freud Centre delivered with a teacher / teaching assistant to embed strategies into everyday routine.
24. At secondary age level, 6 week long self-esteem groups through Girls Space / Boys Space at targeted age groups are offered covering topics such as online safety, healthy relationships, boundaries and consent. Parent groups on 'talking to teens' are also offered.
25. Workshops are offered as themed awareness days such as World Mental Health Day, Children's Mental Health Week, Mental Health Awareness Week. In addition, sessions on exam stress for year 11 and 13 pupils are held.
26. Staff training across primary and secondary schools covers attachment, regulation and competency trauma training, talking to students about suicide and self harm and, staff wellbeing. In total 270 staff members have been supported through this training.
27. Funding for the next wave has been secured meaning a further 12 schools will be supported over the next 12 months.

Equality of Access

28. Data providing a comparison of access against the whole Southwark children and young people's population has been collected since 2021 as presented to the Health and Social Care Scrutiny Commission in March 2021.

29. The latest data are shown below and demonstrate that by reviewing data related to equity leads to officers – across the Council, SLaM and Groundworks - focusing on ensuring that it improves and is reflected in the figures:





30. Equality of access is broadly in line with the Southwark children and young peoples population data for the projects included in this report however we recognise that the percentage of patients on the clinical case load shows that fewer children and young people who are Black or Black British access support. For Kooth, the Mental Health Support Team and Youth New Deal the percentage of children and young people accessing support shows that a higher percentage of Black/ Black British children and young people are accessing the service.
31. Females are represented higher in terms of those accessing services, particularly through Groundworks (71.7%) and the Kooth digital offer (73%). The main age for children and young people to access services is age 10-14 years (49%) although 13-16 year olds (41%) are the key user group for the Kooth Digital Offer.
32. The access data is reported to the Mental Health Steering Group and Emotional Wellbeing and Mental Health Working Group to inform the priorities for improving access. Equality of access is a key priority in the Local Transformation Plan 2023-25.

Policy framework implications

33. The Local Children and Young People's Mental Health and Wellbeing Plan is a national requirement of every Integrated Care System in partnership with the local authority. It is used to develop the ambitions to improve children and young people's mental health services locally. The services highlighted in this report support the delivery of the ambitions in the Local Transformation Plan 2023-25.
34. These services are aligned to Southwark's Borough Plan which sets out that every child deserves the best start in life so that they grow up in a safe, healthy and happy environment and where they have the opportunity to

reach their potential. These services support children with low to moderate mental health needs

Community, equalities (including socio-economic) and health impacts

Community impact statement

35. These services provide support, information, advice and signposting support to children, young people and their family networks within the borough. This provides an earlier intervention reducing the need to access statutory, clinical services by offering support for emotional wellbeing and mental health needs at a low to moderate level and also provide a link to clinical services where needed.

Equalities (including socio-economic) impact statement

36. The Public Sector Equality Duty has been considered in the development of the services outlined in this report and no additional consultation is required. It should be noted that ongoing consultation and co-production is undertaken as a part of delivery of services.
37. The services provide open access with self-referral or referral from the school in the case of the MHST. Data collected to date shows that access represents the demographic make-up of the local community. Equality of access is a key priority in the Local Transformation Plan 2023-25.

Health impact statement

38. The Local Transformation Plan sets out how the provision of mental health services will be developed over the next two years. A core part of this is the reduction of waiting lists over 18 weeks. The services outlined in this report support that reduction by intervening earlier, at low to moderate levels of need, and addressing needs before they escalate.

Climate change implications

39. The providers of the services outlined in this report offer local access. Day to day business is digital where appropriate to minimize the environmental risk.

Resource implications

40. Funding to continue with the services outlined in this report has been secured for 2023-24 and there are no further resource implications.

Legal implications

41. Please see the concurrent report of the Assistant Chief Executive - Governance and Assurance below.

Financial implications

42. There are no financial implications arising as a result of this report.
43. Reserves of £2m to support mental health resilience in schools was set up in 2019. The balance projected at the end of 2022-23 is £577k.

Consultation

44. Consultation with children and young people is an ongoing part of service delivery, this is regularly reported as a part of monitoring of delivery.

SUPPLEMENTARY ADVICE FROM OTHER OFFICERS**Assistant Chief Executive (Governance and Assurance)**

45. There are no specific legal implications arising from this report. It is noted that the delivery of the existing programmes of mental health support described within this report is consistent with the relevant national and local policy and, in particular the ambitions in the Local Transformation Plan

Strategic Director of Finance and Governance

46. There are no specific financial implications arising from this report. The proposals that are set out in the report are consistent with the Council's budget plans.

BACKGROUND DOCUMENTS

Background Papers	Held At	Contact
Inequalities data provider comparison	Children and Adults Services, Commissioning 160 Tooley Street SE1 2QH	Suzanne Green 0207 525 4227
https://modern.gov.southwark.gov.uk/documents/s100623/Inequalities%20data%20provider%20comparison.pdf		
Southwark Borough Plan Inequalities data provider comparison.pdf (southwark.gov.uk)	Children and Adults Services, Commissioning 160 Tooley Street SE1 2QH	Suzanne Green 0207 525 4227
https://www.southwark.gov.uk/planning-and-building-control/planning-policy-and-transport-policy/new-southwark-plan		
Equality Act 2010: Public Sector Equality Duty	Children and Adults Services, Commissioning 160 Tooley Street SE1 2QH	Suzanne Green 0207 525 4227
https://www.legislation.gov.uk/ukpga/2010/15/section/149		

APPENDICES

No.	Title
None	

AUDIT TRAIL

Lead Officer	Genette Laws, Director of Commissioning, Children and Adult Services	
Report Author	Suzanne Green, Programme Lead	
Version	Final	
Dated	02/03/2023	
Key Decision?	No	
CONSULTATION WITH OTHER OFFICERS / DIRECTORATES / CABINET MEMBER		
Officer Title	Comments Sought	Comments Included
Assistant Chief Executive Governance and Assurance	Yes	Yes
Strategic Director of Finance and Governance	Yes	Yes

Cabinet Member	Not applicable	Not applicable
Date final report sent to Constitutional Team		6 March 2023

Item No.	Classification: Open	Date: 16 March 2023	Meeting Name: Health and Wellbeing Board
Report title:		Air Quality Action Plan 2023 – 2027, Air Quality Management Area extension, and Air Quality Joint Strategic Needs Assessment	
Ward(s) or groups affected:		All	
From:		Director of Public Health, Southwark Council	

RECOMMENDATION(S)

1. The Southwark Health and Wellbeing Board note the new Air Quality Action Plan 2023 – 2027, extension to the Air Quality Management Area (AQMA), and recently updated Air Quality Joint Strategic Needs Assessment (JSNA).

BACKGROUND INFORMATION

2. The health effects of air pollution are well known, contributing to cardiovascular illnesses, respiratory illnesses, and cancer.
3. Air pollution is caused by road traffic, as well as industrial, commercial, and domestic sources.
4. Southwark has been taking action to improve air quality in the borough. Three of the recent updates in this area are the new Air Quality Action Plan 2023 - 2027, the expanded AQMA, and the Air Quality JSNA

KEY ISSUES FOR CONSIDERATION

5. The Air Quality [Joint Strategic Needs Assessment](#) was updated in December 2022. The JSNA provides a holistic understanding of air quality in the borough and its impact on the health of local people.
6. The JSNA was created alongside the Air Quality Action Plan, and informed its contents. It was written with support from multiple teams from the Council, as well as external air quality experts and members of the public.
7. The JSNA covers legislation and policy related to air quality and health, information about outdoor air quality in Southwark, and information about indoor air quality in the borough.

8. The JSNA notes that NO₂ and particulates are particularly harmful for health, and that indoor air pollution is also important to consider because people tend to spend up to 90% of their time inside. It notes that nitrogen oxides are the main contributors to local air pollution, but emissions fell by 34% between 2013 and 2019. PM_{2.5} fell by 19% and PM₁₀ by 13%. These changes were mostly driven by a reduction in transport-related emissions. 2019 concentrations of NO₂, PM_{2.5} and PM₁₀ are highest in north-west Southwark and along main roads.
9. The full JSNA is available [on Southwark Council's website](#).
10. The Air Quality Action Plan 2023 – 2027 and Air Quality Management Area Order were published in January 2023.
11. The Air Quality Action Plan 2023 – 2027 was developed through internal and Lead Member consultation that commenced in 2021, and public consultation during 2022. All internal departments with actions on the draft plan were consulted.
12. Public Health were a key partner in the consultation, and the emerging JSNA helped to shape the Air Quality Action Plan 2023 – 2027.
13. The Air Quality Action Plan 2023 - 2027 lists the actions that the council will take to reduce air pollution emissions, to reduce exposure to poor air quality, and to educate people on how to mitigate the effects of poor air quality on their health. The actions are assigned to multiple different teams widely across the council.
14. Actions in the Air Quality Action Plan 2023 – 2027 can be applied across the Air Quality Management Area.
15. Oversight of progress on the Air Quality Action Plan 2023 – 2027 is conducted by the Air Quality Steering Group, comprised of officers with responsibilities for actions on the plan, and chaired by the Director of Public Health.
16. The Air Quality Management Area 2023 extended the area of the Air Quality Management Area to include the whole borough. The previous Air Quality Management Area 2003 had excluded the area of Southwark to the south of the South Circular Road.
17. The Air Quality Action Plan and Air Quality Management Area Order are published on [Southwark Council's website](#).

Policy framework implications

18. The Air Quality Action Plan has been produced as part of our statutory duties to work towards air quality objectives under Part IV of the Environment Act 1995, as set out in UK Clean Air Strategy 2019, and under London Local Air Quality Management.

19. An additional feature of the Air Quality Action Plan 2023 – 2027 is that it will work towards new non-statutory targets set out in World Health Organisation (WHO) objectives, in support of the Mayor of London's aim to achieve the WHO objectives across London by 2030. The WHO targets are more ambitious than the national targets set by central government.
20. The Air Quality Action Plan 2023 – 2027 contributes to:
 - a) Southwark's Council Delivery Plan which has themes on closing the gap to tackle inequalities and provide a great start in life, amongst other commitments. The Air Quality Action Plan includes actions that will directly tackle health issues that particularly affect Black, Asian and minority ethnic communities, provide support to vulnerable residents, and make it easier for residents to lead healthy and active lives. The plan includes actions that will make it easier for children and their carers to mitigate the health effects of air pollution, thereby improving their opportunities to reach their potential.
 - b) actions for tackling the climate emergency, as many sources of air pollution are also carbon emitting combustion sources.
 - c) actions that help keep Southwark safe from COVID-19. There is evidence that air pollution can worsen the symptoms of Covid-19. In addition, the Air Quality Action Plan supports Streetspace measures that improve the potential for social distancing by reclaiming road space from vehicular traffic and allocating it to active travel.

Community, equalities (including socio-economic) and health impacts

Community impact statement

21. The JSNA highlights how communities are affected by air pollution and can be used to inform how the council supports these communities. The Air Quality Action Plan also takes into account differences between communities and geographies, while the expansion of the AQMA highlights that air pollution ultimately affects everyone, especially given its trans-boundary nature.

Equalities (including socio-economic) impact statement

22. Air pollution impacts people differently. Those who are most affected by the health effects of air pollution often contribute to air pollution the least.
23. Low income people in Southwark are often at a higher risk of health effects of air pollution due to factors including living closer to outdoor pollution sources, having houses with worse ventilation and smaller rooms, and being at greater risk of cardiovascular and lung conditions.

Health impact statement

24. Exposure to poor air quality is associated with ill health and premature death. It can cause both short-term and long term health problems. As well as contributing to cardiovascular illnesses, respiratory illnesses, and cancer, a growing body of evidence suggests air pollution is also associated with cognitive function and mental health.
25. Children, older people, and people with certain chronic conditions are particularly affected by air quality.

Climate change implications

26. Tackling air quality contributes to a wide range of outcomes, including assisting with climate change adaptation and mitigation. Many measures that reduce air pollution, for example increasing active travel, are also beneficial in terms of climate change.

Resource implications

27. There are no resource implications

Legal implications

28. There are no legal implications

Financial implications

29. There are no financial implications

Consultation

30. No consultation

SUPPLEMENTARY ADVICE FROM OTHER OFFICERS**Assistant Chief Executive – Governance and Assurance**

31. None sought

Strategic Director of Finance and Governance

32. None sought

Other officers

33. None sought

BACKGROUND DOCUMENTS

Background Papers	Held At	Contact
Title of document(s) Air Quality JSNA 2022	Title of department / unit: Public Health Address: London Borough of Southwark 1 st Floor, Hub 1 PO BOX 64529 London SE1P 5LX	Name: Kate Smith Phone number
Wider determinants of health - Southwark Council		
Air Quality Action Plan 2023 - 2027 Air Quality management Area Order 2023	Title of department / unit: Regulatory Services Address: London Borough of Southwark 3 rd Floor, Hub 1 PO BOX 64529 London SE1P 5LX	Name: Paul Newman Phone number 07824 387367
Air quality strategies, plans and letters - Southwark Council		

APPENDICES

No.	Title
None	

AUDIT TRAIL

Lead Officer	Sangeeta Leahy, Director of Public Health	
Report Author	Paul Newman, Team Leader - Environmental Protection Team Project Manager – airTEXT redevelopment	
Version	Final	
Dated	16 March 2023	
Key Decision?	No	
CONSULTATION WITH OTHER OFFICERS / DIRECTORATES / CABINET MEMBER		
Officer Title	Comments Sought	Comments Included
Assistant Chief Executive – Governance and Assurance	No	No
Strategic Director of Finance and Governance	No	No
Cabinet Member	No	No
Date final report sent to Constitutional Team		7 March 2023

Item No.	Classification: Open	Date: 16 March 2023	Meeting Name: Health and Wellbeing Board
Report title:		COVID-19 Monitoring Report	
Ward(s) or groups affected:		All Southwark wards and population groups	
From:		Director of Public Health, Southwark Council	

RECOMMENDATION(S)

1. The Health and Wellbeing Board note the contents of the COVID-19 Monitoring Report.

BACKGROUND INFORMATION

2. Since early 2020, the Southwark Council Public Health Division have provided surveillance of the COVID-19 pandemic, working with council colleagues and partner organisations e.g. South East London Integrated Care Board, in order to guide strategic and operational responses at a local level.
3. The attached report presents headline statistics for current local and regional COVID-19 infections and vaccination coverage.

KEY ISSUES FOR CONSIDERATION

4. The report presents headline COVID-19 data. Key findings include:
 - Southwark had 84 confirmed cases in the week to 25 February.
 - ONS estimates 1 in 35 people in London had COVID 19 as at 21 February.
 - Across the capital, there were around 1,300 hospital in-patients with COVID 19, with around 80 of these in critical care as of 3 March.
 - Over 48,000 Southwark GP-registered patients have now had an autumn booster dose of the COVID-19 vaccine.

Community, equalities (including socio-economic) and health impacts

Community impact statement

5. Communities across Southwark continue to be impacted by the COVID-19 pandemic, however the step-down in wide-spread community test limits our ability to monitor levels of infections in different neighbourhoods.

Equalities (including socio-economic) impact statement

6. The report presents COVID-19 vaccination disparities among different age groups across each phase of the vaccine programme. Inequalities analysis of COVID-19 infections is unreliable at a local level due to step-down of widespread testing in the community.

Health impact statement

7. The report summarises current infection levels in Southwark and London, along with COVID-19 hospital inpatient data, and vaccination coverage. The roll-out of the COVID-19 vaccination programme has helped to mitigate any significant increase in hospitalisations during the 2022-23 winter period when compared to the early years of the pandemic.

Climate change implications

8. There are no immediate climate change implications.

Resource implications

9. There are no resource implications as a direct outcome of this report.

Legal implications

10. There are no legal implications.

Financial implications

11. There are no financial implications.

Consultation

12. There was no formal consultation.

SUPPLEMENTARY ADVICE FROM OTHER OFFICERS

Assistant Chief Executive – Governance and Assurance

13. None sought.

Strategic Director of Finance and Governance

14. None sought.

Other officers

15. None sought.

BACKGROUND DOCUMENTS

Background Papers	Held At	Contact
COVID-19 Monitoring Report, 3 March 2023	Public Health Division, Children & Adults Department	Chris Williamson 02075251774

APPENDICES

No.	Title
Appendix 1	Covid-19 Monitoring report: Southwark's Outbreak Prevention & Control Plan

AUDIT TRAIL

Lead Officer	Sangeeta Leahy, Director of Public Health	
Report Author	Chris Williamson, Head of Health & Wellbeing Keira Chapman, Health Intelligence Analyst	
Version	Final	
Dated	03 March 2023	
Key Decision?	No	
CONSULTATION WITH OTHER OFFICERS / DIRECTORATES / CABINET MEMBER		
Officer Title	Comments Sought	Comments Included
Assistant Chief Executive – Governance and Assurance	No	No
Strategic Director of Finance and Governance	No	No
Cabinet Member	No	No
Date final report sent to Constitutional Team		3 March 2023

COVID-19 Monitoring Report

Southwark's Outbreak Prevention & Control Plan

Knowledge & Intelligence Team
Southwark Public Health Division

3 March 2023

 @lb_southwark  facebook.com/southwarkcouncil

GATEWAY INFORMATION

Report title:	COVID-19 Monitoring Report. Southwark's Outbreak Prevention & Control Plan
Prepared by:	K Chapman
Contributors:	
Approved by:	C Williamson
Suggested citation:	COVID-19 Monitoring Report. Southwark's Outbreak Prevention & Control Plan. Southwark Council: London. 2022.
Contact details:	publichealth@southwark.gov.uk
Date of publication:	3 March 2023

24

Confirmed case numbers in Southwark have seen a recent increase, and ONS estimate a rise in infections across London

KEY MESSAGES

Confirmed cases across Southwark, London and England have seen an increase over the past fortnight. ONS are also estimating a recent rise infections across London.

- Southwark had 84 confirmed cases of COVID-19 in the week to 25 February.
- ONS estimate that infections have increased substantially over the past fortnight, with 1 in 35 people in London estimated to have COVID-19 as at 21 February.

The number of hospital inpatients with COVID-19 across London has increased in recent weeks.

- Across the capital, there are now around 1,300 hospital inpatients with COVID-19, with around 80 people in mechanical ventilation beds in critical care.
- At our local trusts, COVID-19 inpatient numbers have remained stable.

Over 48,000 Southwark GP-registered patients have now had an autumn booster dose of the COVID-19 vaccine.

Confirmed case numbers in Southwark have seen a recent increase, and ONS estimate a rise in infections across London

CASES

Confirmed cases across Southwark, London and England have seen an increase over the past fortnight, but are starting to stabilise. ONS are also estimating a recent rise in infections across London.

- Southwark's 7-day incidence rate to 25 February is 26 per 100,000. This equates to 84 confirmed cases.
- ONS also estimate that infections across London have risen substantially, with 1 in 35 people in London estimated to have COVID-19 as at 21 February.

Figure 1: Weekly COVID-19 incidence rate per 100,000 population

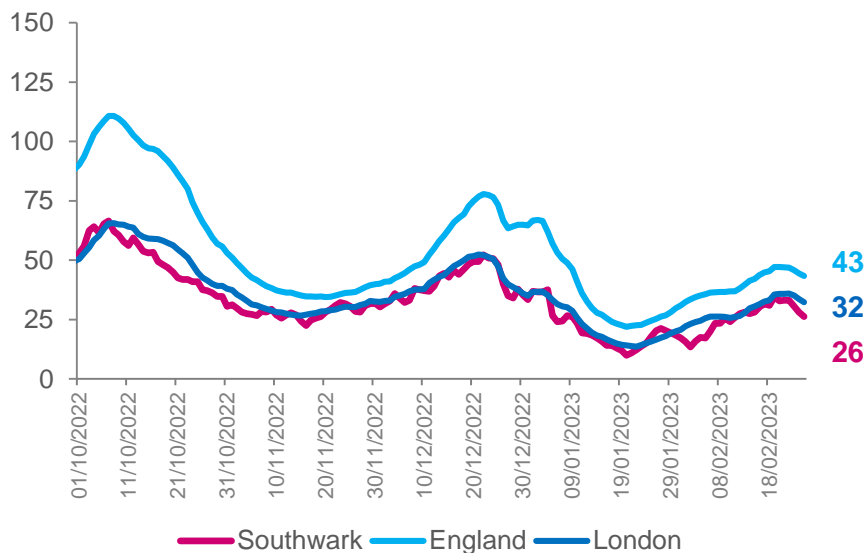
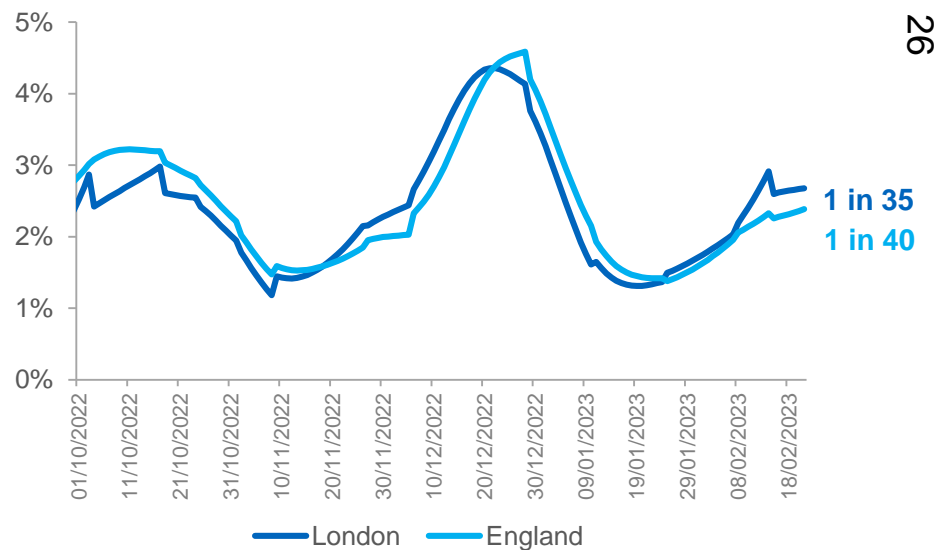


Figure 2: Modelled daily population percentage testing positive for COVID-19



References

1. Coronavirus.data.gov.uk/Cases. Data to 25 Feb.
2. ONS Infection Survey. Data to 21 Feb.

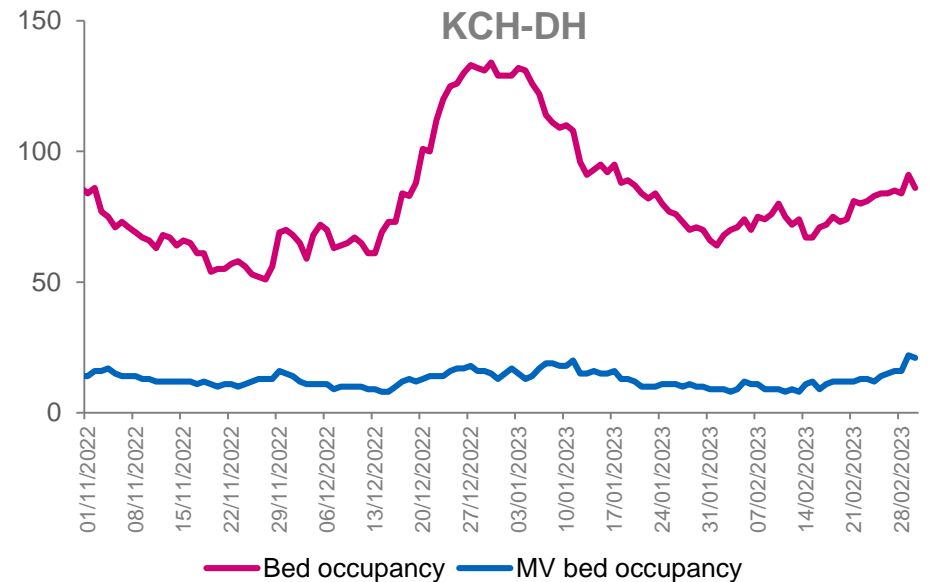
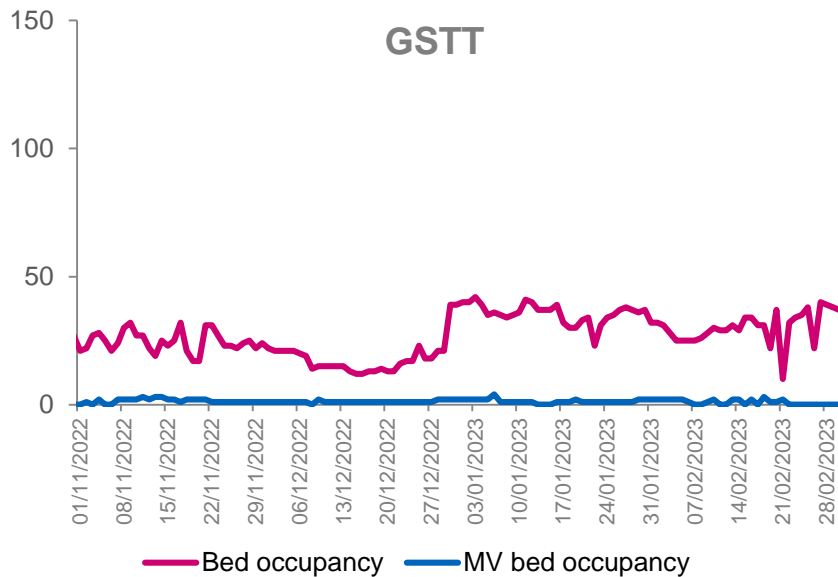
COVID-19 inpatient numbers at our local hospital trusts have remained stable

SECONDARY CARE

COVID-19 inpatient numbers have remained low at both KCH-DH and GSTT trusts.

- There are currently **1,251** patients in hospital with COVID-19 across London. Of these patients, **76** are in mechanical ventilation beds in critical care.

Figure 3: Daily occupancy of all beds and mechanical ventilation beds, for patients with diagnosed COVID-19 since 1 November 2022



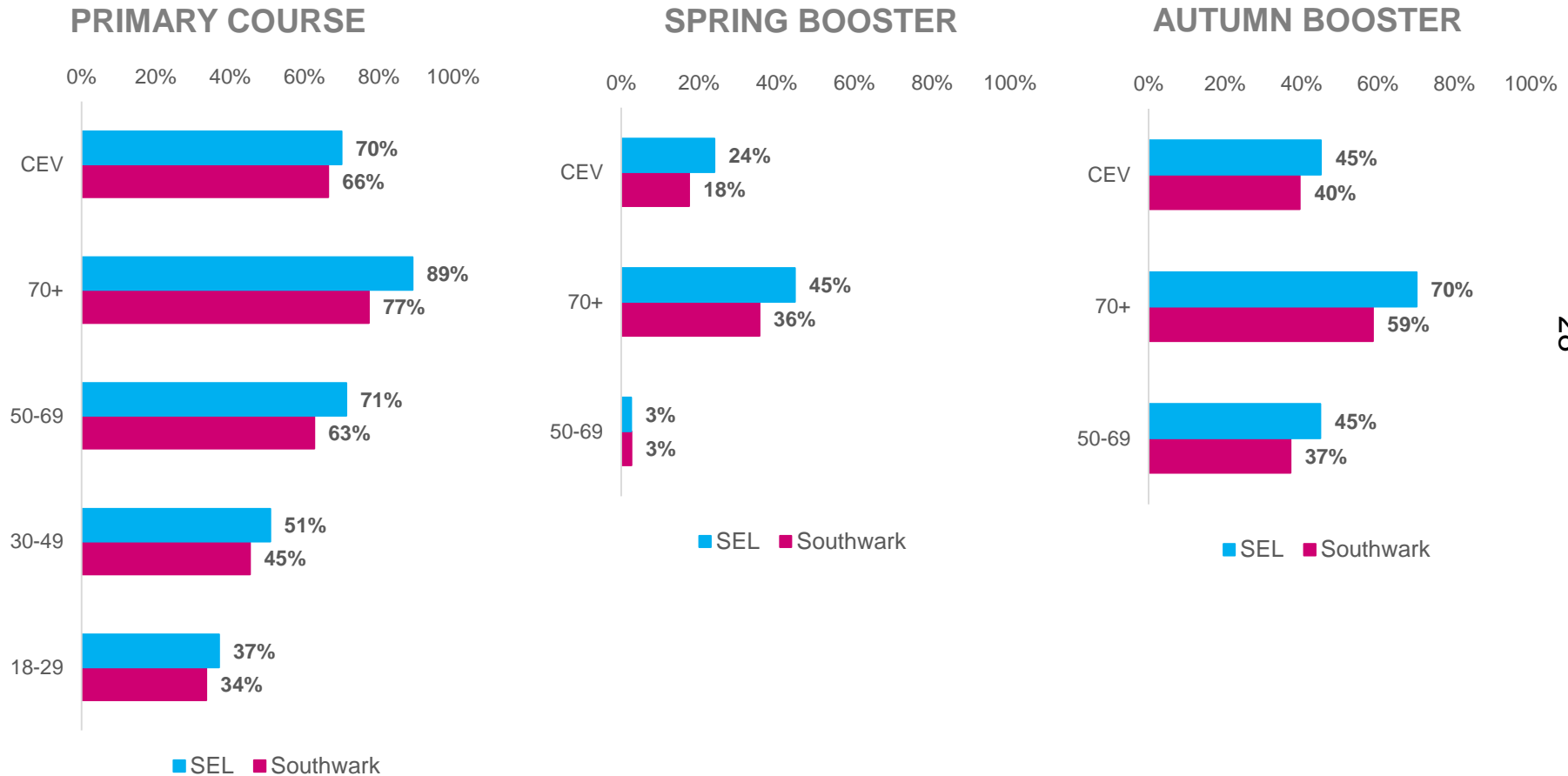
27

References

- SEL Early Warning report. Data to 2 Mar.
- Coronavirus.data.gov.uk/healthcare. Data to 1 Mar.

Over 48,000 Southwark GP-registered patients have now had an autumn booster dose of the COVID-19 vaccine

COVID-19 VACCINATIONS



Note: Primary course equals a first, second and booster dose of the vaccine

Reference

1. SEL ICS COVID-19 & Flu Vaccination Dashboard. Data to 27 Feb.

Find out more at
southwark.gov.uk/publichealth

Southwark Public Health Division

 @lb_southwark  facebook.com/southwarkcouncil

This page is intentionally blank

